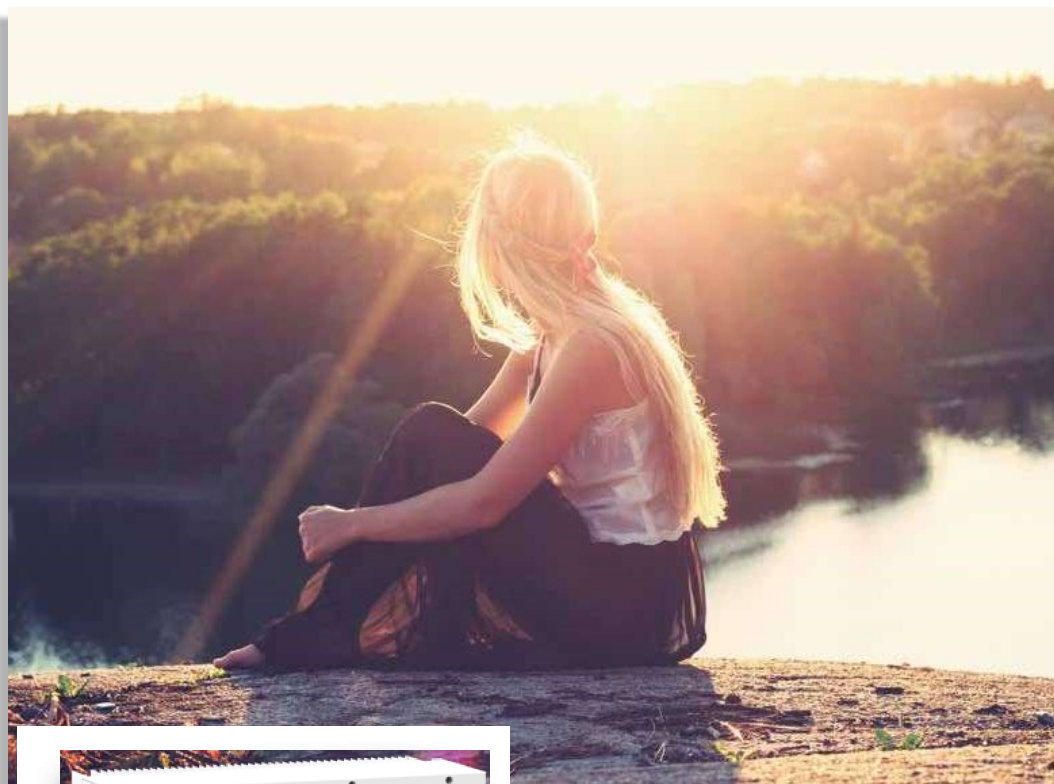


Three Phase String Inverter(LV)

SUN- 35 / 40 / 45 / 50 K-G-LV



- LV** 127/220Vac and 60Hz, Three phase system
- M** 4 MPP trackers, Max. efficiency up to 98.7%
- F** Zero export application, VSG application
- A** String intelligent monitoring (optional)
- W** Wide output voltage range
- PID** Anti-PID function (Optional)

Technical Data

Model	SUN-35K-G02-LV	SUN-40K-G-LV	SUN-45K-G-LV	SUN-50K-G-LV
Input Side				
Max. DC Input Power (kW)	45.5	52	58.5	65
Max. DC Input Voltage (V)	800			
Start-up DC Input Voltage (V)	250			
MPPT Operating Range (V)	200~700			
Max. DC Input Current (A)	30+30+30+30	40+40+40+40		
Max. Short Circuit Current (A)	45+45+45+45	60+60+60+60		
Number of MPPT / Strings per MPPT	4/3	4/4		
Output Side				
Rated Output Power (kW)	35	40	345	50
Max. Active Power (kW)	38.5	44	49.5	55
Nominal Output Voltage / Range (V)	3L/N/PE 127/220 176Vac~242Vac (this may vary with grid standards)			
Rated Grid Frequency (Hz)	60 / 50 (Optional)			
Operating Phase	Three phase			
Rated AC Grid Output Current (A)	91.9	104.9	118.1	131.2
Max. AC Output Current (A)	101.1	115.5	129.9	144.4
Output Power Factor	0.8 leading to 0.8 lagging			
Grid Current THD	<3%			
DC Injection Current (mA)	<0.5%			
Grid Frequency Range	57~62			
Efficiency				
Max. Efficiency	98.7%			
Euro Efficiency	98.3%			
MPPT Efficiency	>99%			
Protection				
DC Reverse-Polarity Protection	Yes			
AC Short Circuit Protection	Yes			
AC Output Overcurrent Protection	Yes			
Output Overvoltage Protection	Yes			
Insulation Resistance Protection	Yes			
Ground Fault Monitoring	Yes			
Anti-islanding Protection	Yes			
Temperature Protection	Yes			
Integrated DC Switch	Yes			
Remote software upload	Yes			
Remote change of operating parameters	Yes			
Surge protection	DC Type II / AC Type II			
General Data				
Size (mm)	700Wx575Hx297D			
Weight (kg)	60			
Topology	Transformerless			
Internal Consumption	<1W (Night)			
Running Temperature	-25~-65°C, >45°C derating			
Ingress Protection	IP65			
Noise Emission (Typical)	<55 dB			
Cooling Concept	Smart cooling			
Max. Operating Altitude Without Derating	2000m			
Designed Lifetime	>20 years			
Grid Connection Standard	CEI 0-21, VDE-AR-N 4105, NRS 097, IEC 62116, IEC 61727, G99, G98, VDE 0126-1-1, RD 1699, C10-11			
Operating Surroundings Humidity	0-100%			
Safety EMC / Standard	IEC/EN 61000-6-1/2/3/4, IEC/EN 62109-1, IEC/EN 62109-2			
Features				
DC Connection	MC-4 mateable			
AC Connection	IP65 rated plug			
Display	LCD 240 x 160			
Interface	RS485/RS232/Wifi/LAN			